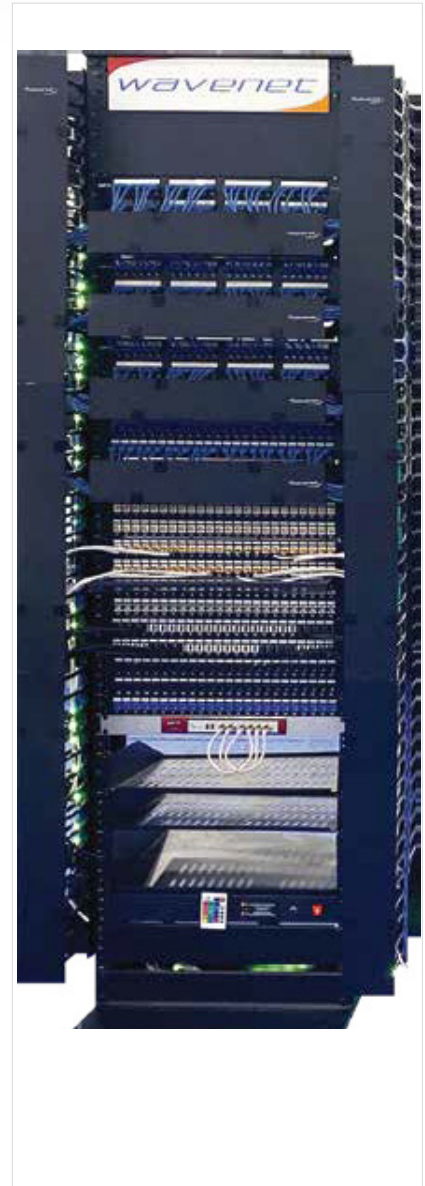
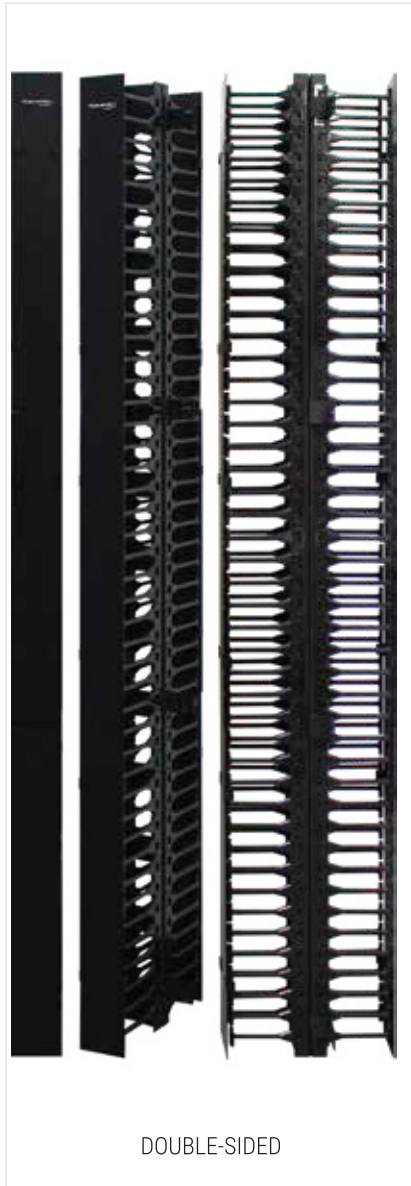


VERTICAL SINGLE-SIDED AND DOUBLE-SIDED CABLE MANAGERS



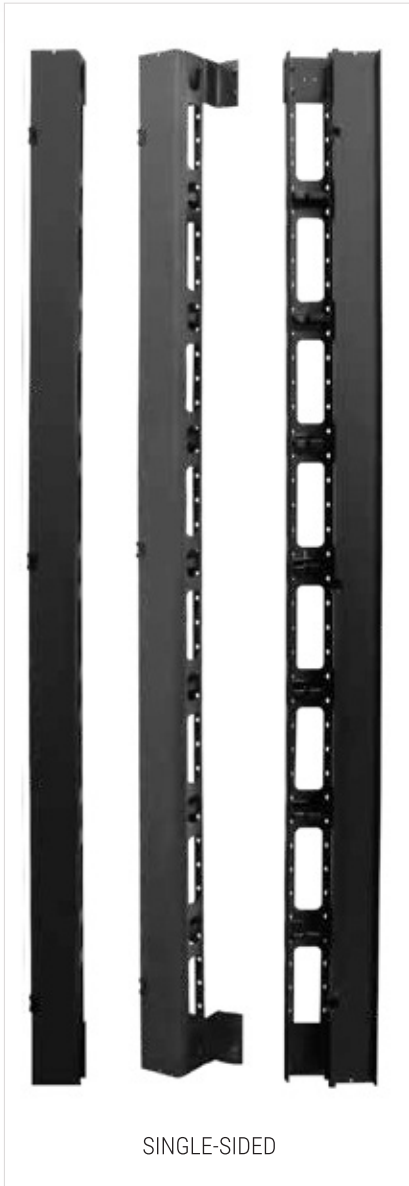
FEATURES:

- Single sided - 4" x 6" 78", w/ hinged covers
- Double sided - 4"x 12" 78", w/ hinged covers
- Large front and rear openings
- Dual hinged covers
- Smooth rear oval holes for easy front-to-back cable routing
- Flexible fingers ensure best cable bend radius
- Compatible with 2-Post or 4-Post Racks
- Three sectional dual hinged covers for easy cable access

ORDERING Information

PART NUMBER	DEPTH	DESCRIPTION
VCMC-4678S-SW	4.5"	Single-Sided Vertical Cable Manager, 4" x 4.5" 78", w/ Dual Hinged Covers, Large Front And Rear Openings
VCMC-41278D-SW	9.0"	Double-Sided Vertical Cable Manager, 4" x 9.0" 78", w/ Dual Hinged Covers, Large Front And Rear Openings

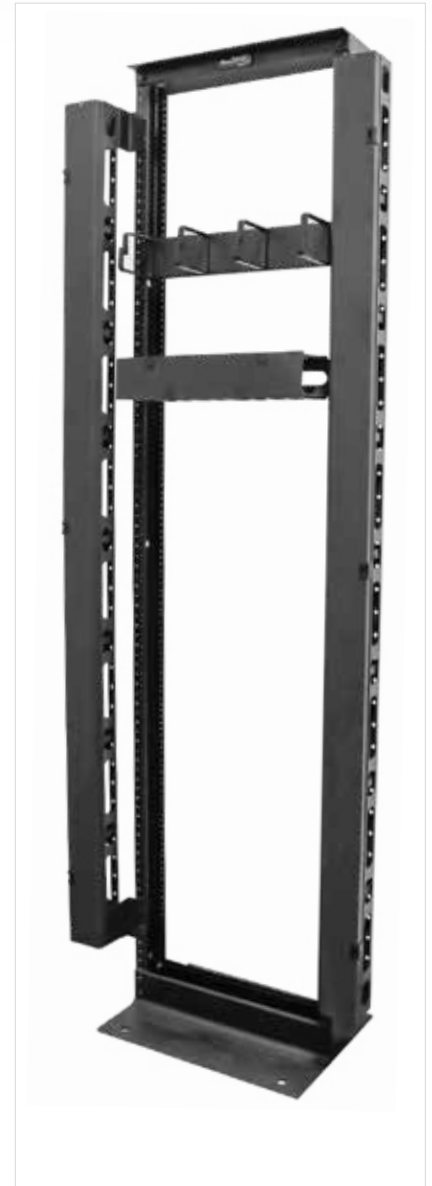
METAL SINGLE-SIDED & DOUBLE-SIDED VERTICAL CABLE MANAGERS



SINGLE-SIDED



DOUBLE-SIDED



FEATURES:

- Easy removable hinged cover(s) provides quick access to cable
- Attached Vertically onto Front or Rear Rails 2-Post and 4-Post Open Frame Racks
- Available in Single-Sided and Double-Sided and Measures 3.6" W x 3"D x H" 74"
- Integrated Plastic Cable Rings for Proper Cable Management
- Black Powder Coat Finish

ORDERING Information

PART NUMBER	DEPTH	DESCRIPTION
VCNB-3X3X74S	3"	Vertical Cable Management Channel Single-Sided, 3" x 3" x 74", w/ Hinged Covers
VCNB-3X3X74D	6"	Vertical Cable Management Channel Double-Sided, 3" x 6" x 74", w/ Hinged Covers

HIGH-DENSITY SINGLE-SIDED HORIZONTAL CABLE MANAGERS



FEATURES:

- Large slotted fingers design for high volume patch cords
- Cover comes with (4) hinges that can be opened from top or bottom
- Rear openings for cable pass-through
- Measures 19" standard EIA width with 4.5" deep
- Black powder-coat textured finish
- Available in 1U/2U/3U

ORDERING Information

PART NUMBER	U SIZE	DESCRIPTION	PACKAGE
MDH-SSW-1U	1U	Horizontal High-Density, Single-Sided Cable Manager, Dual Hinge	SINGLE PACK
MDH-SSW-2U	2U	Horizontal High-Density, Single-Sided Cable Manager, Dual Hinge	SINGLE PACK
MDH-SSW-3U	3U	Horizontal High-Density, Single-Sided Cable Manager, Dual Hinge	SINGLE PACK

PLASTIC SINGLE AND DOUBLE SIDED HORIZONTAL CABLE MANAGERS



FEATURES:

- Single-Sided & Double-Sided, w/ Cover, 1U/2U
- Large Front Finger Openings
- Dual hinged covers

ORDERING Information

PART NUMBER	U SIZE	DESCRIPTION	PACKAGE
PDH-SSW-1U	1U	Plastic Duct Horizontal Cable Manager, Single-Sided, w/Cover	SINGLE
PDH-SSW-2U	2U	Plastic Duct Horizontal Cable Manager, Single-Sided, w/Cover	SINGLE
PDH-DSW-1U	1U	Plastic Duct Horizontal Cable Manager, Double-Sided, w/Covers	SINGLE
PDH-DSW-2U	2U	Plastic Duct Horizontal Cable Manager, Double-Sided, w/Covers	SINGLE

METAL SINGLE SIDED HORIZONTAL CABLE MANAGERS



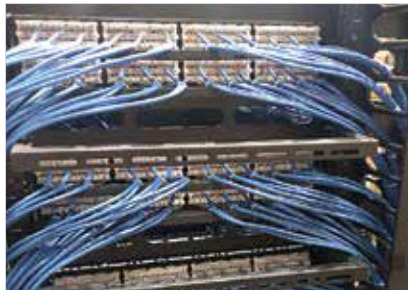
FEATURES:

- Single-sided, 2U / 1U
- 4 / 5 horizontal rings for patch cords management
- Used with cabinets, brackets and racks
- Secure all types of low-voltage cables
- Large rings ideal for small to large cable bundles
- Black powder coated finish
- Made In USA

ORDERING Information

PART NUMBER	U SIZE	DESCRIPTION	PACKAGE
HCM1901-4	1U	Metal Four(4) Rings Horizontal Cable Manager, Single-Sided	SINGLE PACK
HCM1902-4	2U	Metal Four(4) Rings Horizontal Cable Manager, Single-Sided	SINGLE PACK

REAR CABLE MANAGEMENT SUPPORT BARS



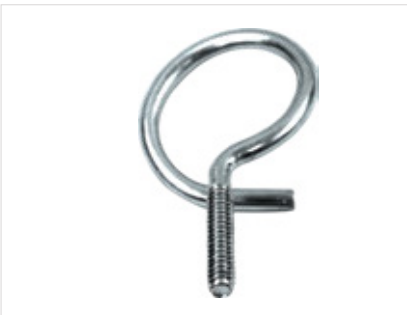
FEATURES:

- 19" wide
- 5" depth rear cable management support bar
- Available in 5-Packs

ORDERING Information

PART NUMBER	DESCRIPTION	PACKAGE
RCMSB5BK	19" Wide, 5" Depth, Rear Cable Management Support Bars	5-PACK

BRIDLE RINGS AND BEAM CLAMPS



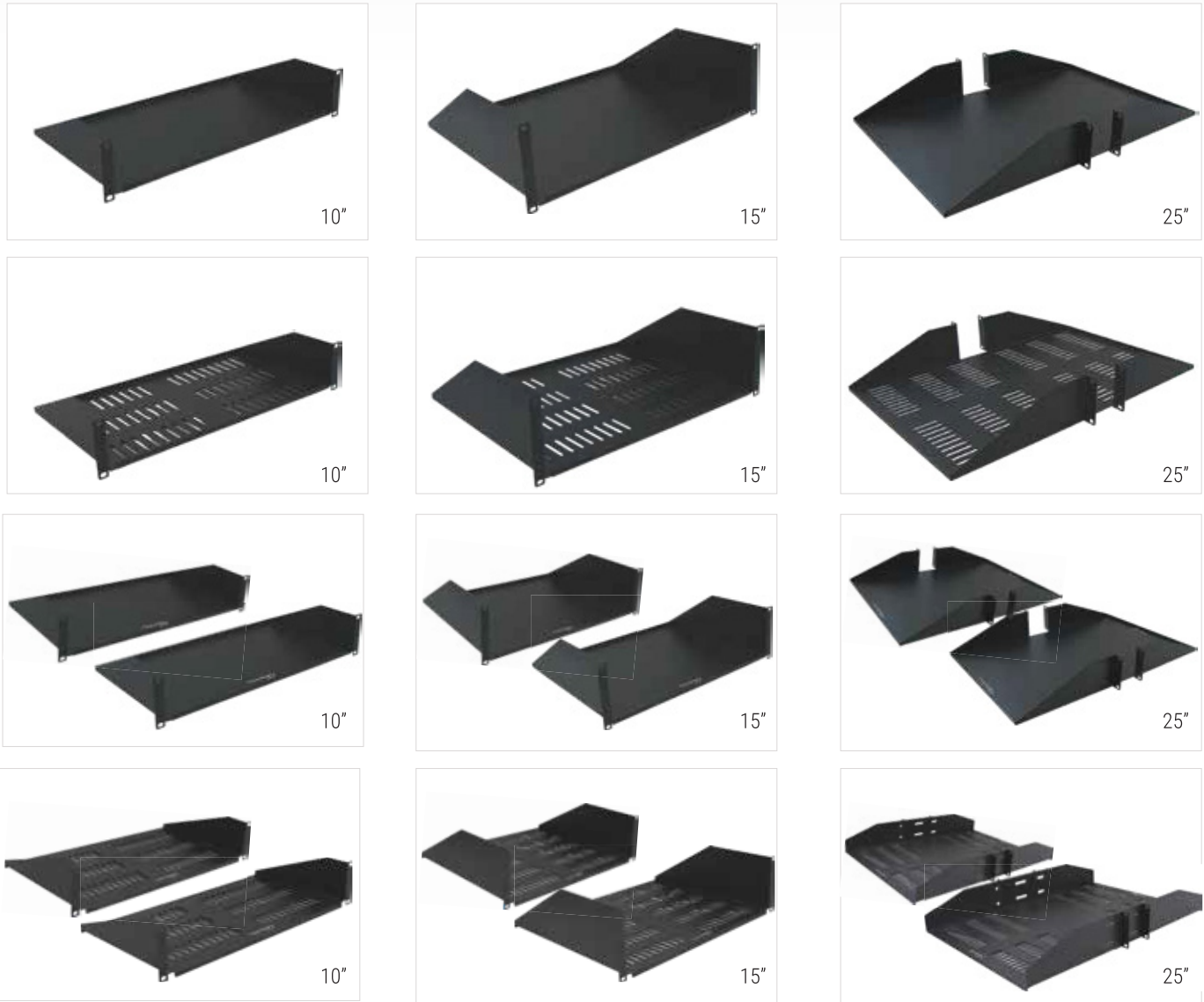
BRIDLE RING & BEAM CLAMP FEATURES:

- 100-Pack
- Hooks bridle rings & other hardware
- Indoor/Outdoor application

ORDERING Information

PART NUMBER	DESCRIPTION	PACKAGE
BR100	Bridle Ring w/Thread, 1" Diameter, #10-24 Metal, Screw	100-PACK
BR150	Bridle Ring w/Thread, 1 1/2" Diameter, 1/4" Metal, Screw	100-PACK
BCSS	Spring Steel Beam Clamp, Decromet, #1/4-20	100-PACK

SOLID & VENTED BOTTOM EQUIPMENT SHELVES (SINGLE & 2-PACKS)

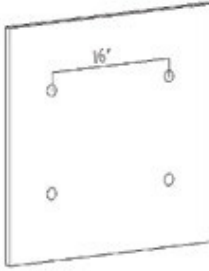
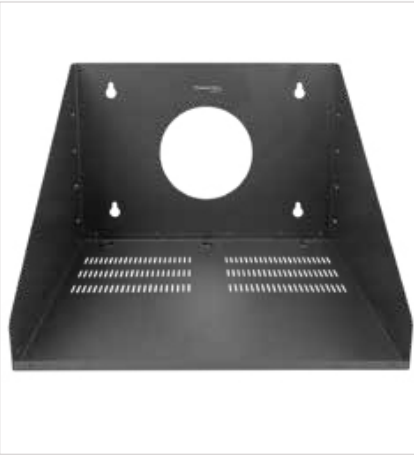


ORDERING Information

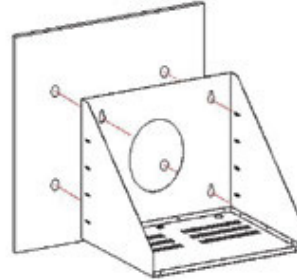
PART NUMBER	U SIZE	DESCRIPTION	PACKAGE
SHELF-10SSS-N	2U	Rack Shelf, 10" Deep Single-Sided Solid	SINGLE
SHELF-10SSV-N	2U	Rack Shelf, 10" Deep Single-Sided Vented	SINGLE
SHELF-15SSS-N	3U	Rack Shelf, 15" Deep Single-Sided Solid	SINGLE
SHELF-15SSV-N	3U	Rack Shelf, 15" Deep Single-Sided Vented	SINGLE
SHELF-25DDS-N	2U	Rack Shelf, 25" Deep Double-Sided Solid	SINGLE
SHELF-25DDV-N	2U	Rack Shelf, 25" Deep Double-Sided Vented	SINGLE
SHELF-10SSS-S2PK	2U	Rack Shelf, 10" Deep Single-Sided Solid	2-PACK
SHELF-10SSV-S2PK	2U	Rack Shelf, 10" Deep Single-Sided Vented	2-PACK
SHELF-15SSS-S2PK	3U	Rack Shelf, 15" Deep Single-Sided Solid	2-PACK
SHELF-15SSV-S2PK	3U	Rack Shelf, 15" Deep Single-Sided Vented	2-PACK
SHELF-25DDS-S2PK	2U	Rack Shelf, 25" Deep Double-Sided Solid	2-PACK
SHELF-25DDV-S2PK	2U	Rack Shelf, 25" Deep Double-Sided Vented	2-PACK

SHELVES AND CABLE MANAGEMENT

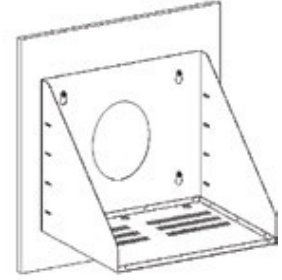
WALL MOUNT SHELF



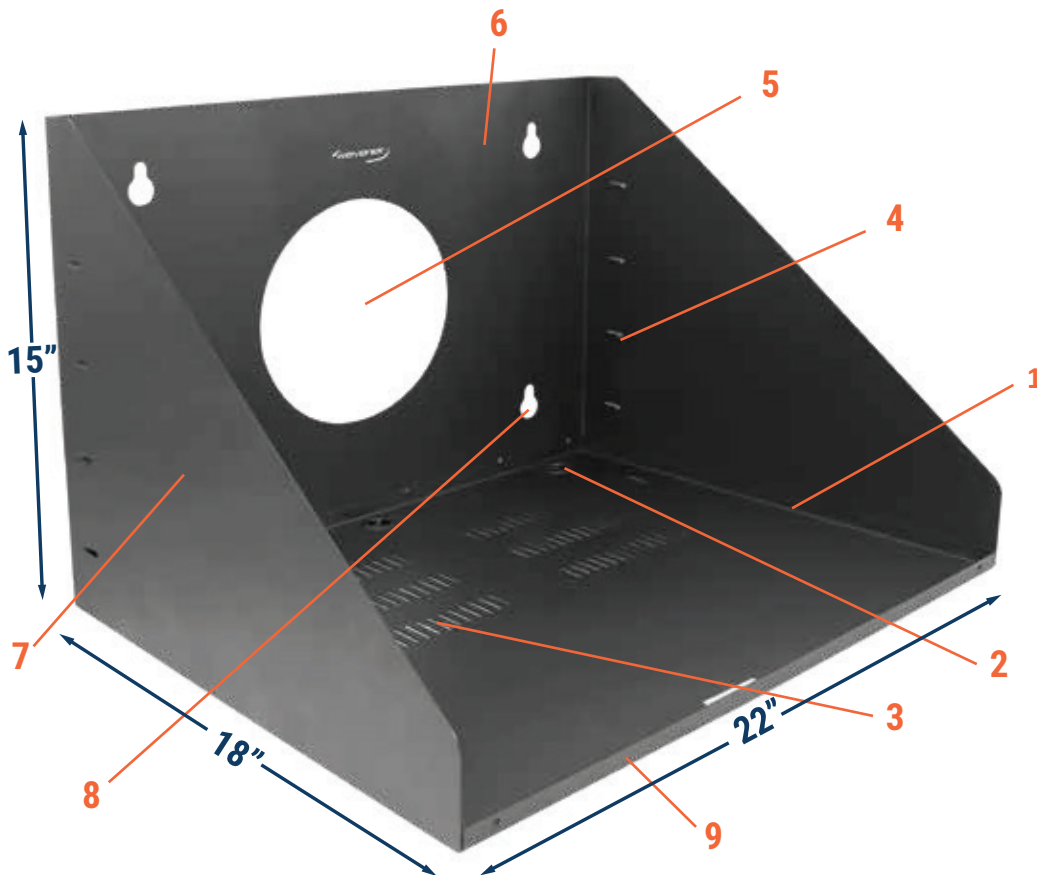
STEP 1
Use a level to mark locations or mounting holes.



STEP 2
Fix the wall mount shelf on the wall by (4) M6 screws



STEP 3
Put equipment on the shelf.



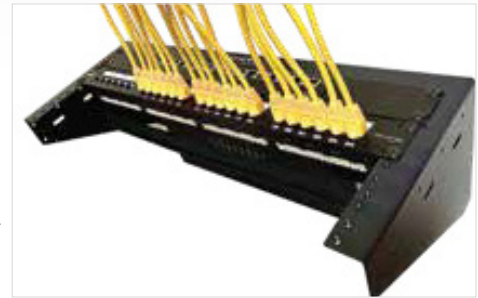
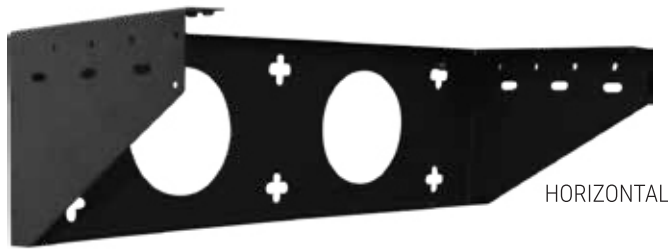
FEATURES (Refer to diagram above):

- 1. Fully welded and made from 16-gauge steel
- 2. Shelf bottom includes (3) 1" knockout
- 3. Vented bottom for air ventilation and dissipation of heat
- 4. Left and right side tie points to secure cables
- 5. Includes center opening and bottom knockouts
- 6. Alternative mounting solution to racks, cabinets and brackets
- 7. Can be used with various equipment within 18" deep by 22" wide
- 8. 16" on center between wood studs mounting
- 9. 140 lbs. weight capacity
- 10. Measures: 15.3" H x 22" W x 18.2" Depth

ORDERING Information

PART NUMBER	DESCRIPTION	PACKAGE
WMS-18-SW	Wall Mount Shelf, 15.3"H x 22"W x 18.2"D	SINGLE

VERTICAL & HORIZONTAL 4U WALL MOUNT BRACKET



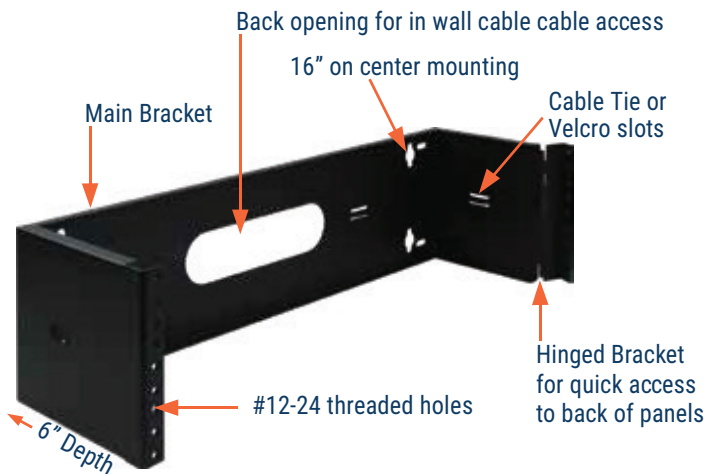
FEATURES:

- Depth-less design, compatible with 19" wide equipment
- Supports horizontal & vertical mounting
- Pass-through openings for cable entry and exit
- Integrated with cable and Velcro tie-down slots
- Available in 4U; ideal for small to medium sized installations
- EIA/ECA-310-E (Revision of EIA-310-D) compliant
- Up to 150 lbs. load capacity
- Black powder coat finish
- Includes mounting hardware

ORDERING Information

PART NUMBER	U SIZE	DESCRIPTION	PACKAGE
VWMB-4U-SW	4U	19" Wide, Vertical & Horizontal Wall Mount Bracket, w/#12-24 Screws	SINGLE PACK

WALL MOUNT HINGED BRACKETS



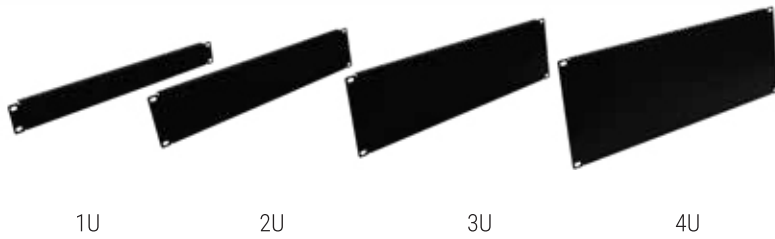
FEATURES:

- Designed for installations where space is limited and used as alternative to racks or cabinets
- Designed with single-sided hinged for quick access to back of panels
- 6" depth ideal for mounting patch panels and cable managers
- 19" wide with #12-24 threaded EIA hole pattern
- Integrated with cable tie or Velcro tie slots
- Back opening for in wall cable access
- 16" on center, keyhole mounting
- Available in 1U/2U/3U/4U sizes

ORDERING Information

PART NUMBER	U SIZE	DESCRIPTION	PACKAGE
WMHB-1U	1U	Wall Mount Hinged Bracket, 6" Deep w/ #12-24 Holes And Screws	SINGLE PACK
WMHB-2U	2U	Wall Mount Hinged Bracket, 6" Deep w/ #12-24 Holes And Screws	SINGLE PACK
WMHB-3U	3U	Wall Mount Hinged Bracket, 6" Deep w/ #12-24 Holes And Screws	SINGLE PACK
WMHB-4U	4U	Wall Mount Hinged Bracket, 6" Deep w/ #12-24 Holes And Screws	SINGLE PACK

19" WIDE BLANK PANELS



FEATURES:

- 19" wide blank racks, cabinets & brackets panels
- Conceals empty spaces in racks, cabinet and brackets
- Available in 2", 3" and 5" diameters
- Available in 1U, 2U, 3U & 4U

ORDERING Information

PART NUMBER	U SIZE	DESCRIPTION	PACKAGE
BP-1U-5N	1U	Blank Panel, w/12-24 Screws	5-PACK
BP-2U-5N	2U	Blank Panel, w/12-24 Screws	5-PACK
BP-3U-5N	3U	Blank Panel, w/12-24 Screws	5-PACK
BP-4U-5N	4U	Blank Panel, w/12-24 Screws	5-PACK

CABLE MANAGEMENT DISTRIBUTION "D" RINGS



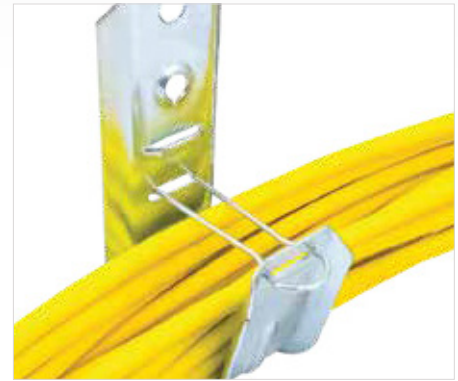
FEATURES:

- Metal distribution "D" ring, 50-Pack
- Organize cables in various angles
- Indoor/outdoor applications
- Available in 2", 3" and 5" diameters

ORDERING Information

PART NUMBER	DESCRIPTION	PACKAGE
DR200	Metal Distribution "D" Ring, 2" Diameter	50-PACK
DR300	Metal Distribution "D" Ring, 3" Diameter	50-PACK
DR500	Metal Distribution "D" Ring, 5" Diameter	50-PACK

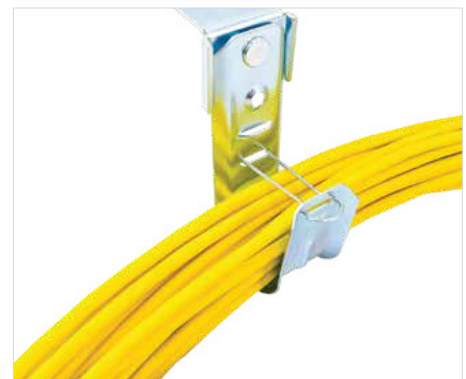
J-HOOKS, WALL MOUNT STYLE



ORDERING Information

PART NUMBER	SIZE (DIAMETER)	MOUNTING STYLE	CAT5E Cable CAPACITY	CAT6 Cable CAPACITY	CAT6A Cable CAPACITY	ROD SIZE	WIRE SIZE	STATIC PART# LOAD	PACKAGE
JHWM34	3/4"	WALL MOUNT	15	10	5	N/A	N/A	60 LBS.	25-PACK
JHWM13	1- 5/16"	WALL MOUNT	50	40	25	N/A	N/A	60 LBS.	25-PACK
JHWM02	2"	WALL MOUNT	90	60	35	N/A	N/A	60 LBS.	25-PACK
JHWM04	4"	WALL MOUNT	330	220	80	N/A	N/A	60 LBS.	25-PACK

J-HOOKS, CEILING MOUNT STYLE



ORDERING Information

PART NUMBER	SIZE (DIAMETER)	MOUNTING STYLE	CAT5E Cable CAPACITY	CAT6 Cable CAPACITY	CAT6A Cable CAPACITY	ROD SIZE	WIRE SIZE	STATIC PART# LOAD	PACKAGE
JHCM34-T	3/4"	CEILING MOUNT	15	10	5	N/A	N/A	60 LBS.	25-PACK
JHCM13-T	1- 5/16"	CEILING MOUNT	50	40	25	N/A	N/A	60 LBS.	25-PACK
JHCM02-T	2"	CEILING MOUNT	90	60	35	N/A	N/A	60 LBS.	25-PACK
JHCM04-T	4"	CEILING MOUNT	330	220	80	N/A	N/A	60 LBS.	25-PACK

J-HOOKS, MULTI-FUNCTION "BATWING" STYLE



ORDERING Information

PART NUMBER	SIZE (DIAMETER)	MOUNTING STYLE	CAT5E Cable CAPACITY	CAT6 Cable CAPACITY	CAT6A Cable CAPACITY	ROD SIZE	WIRE SIZE	STATIC PART# LOAD	PACKAGE
JHMF34	3/4"	BATWING	15	10	5	1/4"	#12-#8	60 LBS.	25-PACK
JHMF13	1- 5/16"	BATWING	50	40	25	3/8"	#12-#8	60 LBS.	25-PACK
JHMF02	2"	BATWING	90	60	35	3/8"	#12-#8	60 LBS.	25-PACK

* Cable capacity is calculated based on a 70% fill rate.

J HOOK FEATURES:

- Designed for use with threaded rods, ceiling drop wires and wall mount
- Provide proper support for CAT 5E/6/6A, fiber optic, and A/V cabling
- Ideal for multi-applications usage such as new construction or structural attachment
- Cost-saving alternatives compared to more expensive cable tray or ladder rack runway systems
- Designed with multiple wall mounting holes, hook and loop and cable tie knockouts
- Complies with TIA-568-C, TIA-569-C, and ISO/IEC 14763-2 requirements
- Rounded edges on J-Hooks provide easy pulling and help bend radius
- Made from 18 gauge galvanized steel
- Retainer clips included with J-Hooks
- Packaged in 25 packs



Package - Inside
(JHWM02-T 25-PACK)



Package - Outside



Wall Mount
JHWM13
(BACK SIDE)



Ceiling Mount
JHWM13-T
(BACK SIDE)



Multi-Function
Clip "Batwing"
JHMF13
(BACK SIDE)