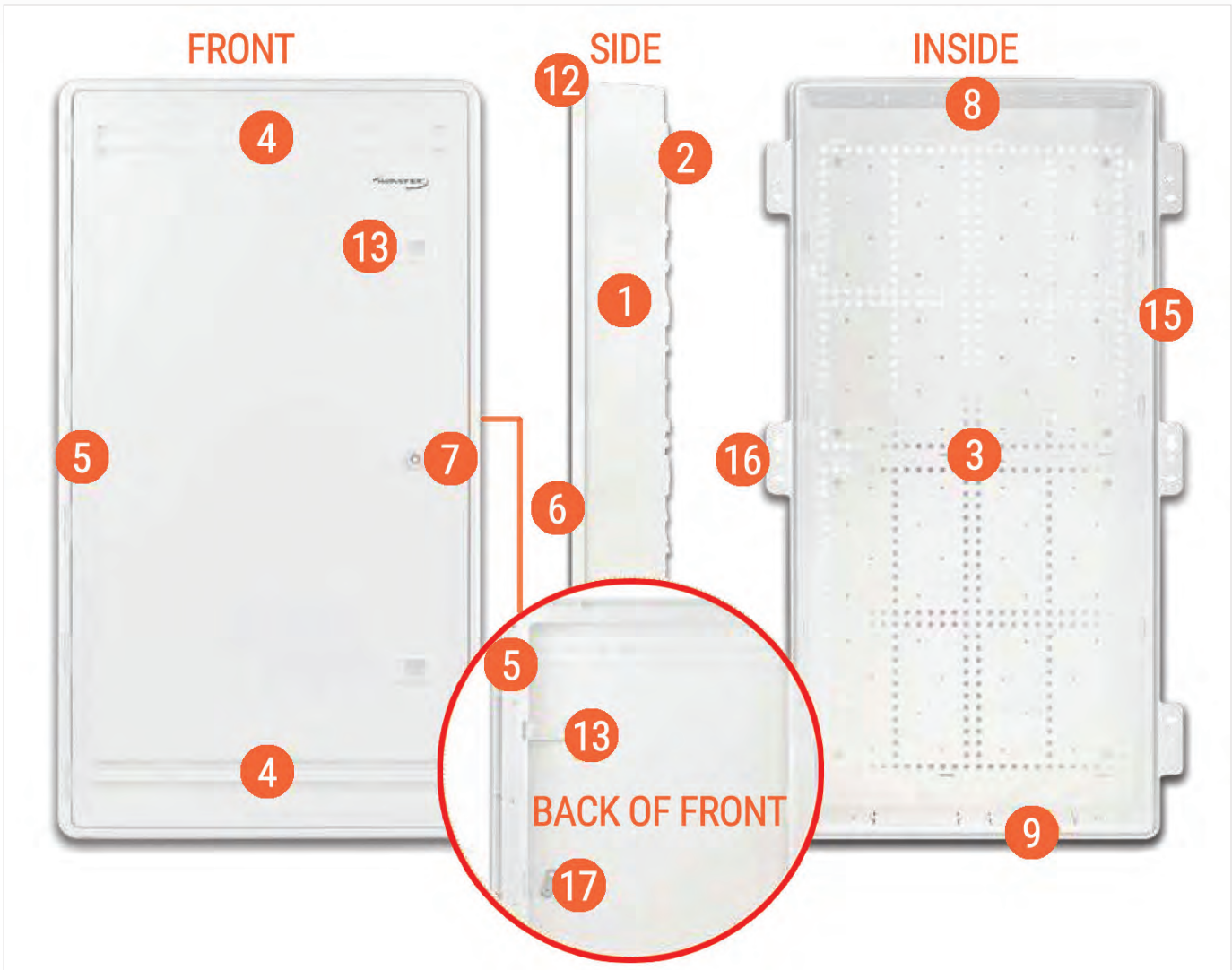


## RESIDENTIAL STRUCTURED WIRING ENCLOSURES (PLASTIC, EMPTY, SINGLE / 4-PACKS)



### FEATURES (Refer To Diagram Above):

- 1. UL-rated ABS plastic
- 2. Surface or flush mounting
- 3. Horizontal & vertical mounting hole patterns
- 4. Door hidden vent holes
- 5. Hinged door with trim ring
- 6. Reversible door
- 7. Lockable
- 8. Top & bottom knockouts for cable entry & exit
- 9. Two outlet knock-outs for power outlets
- 10. Available in two sizes 15" and 30"
- 11. Wi-Fi friendly signals
- 12. Enclosure Dimensions:  
15"H x 14.42" W x 3.42" D  
30"H x 14.42" W x 3.42" D
- 13. Door latch
- 14. Wiring location label
- 15. Cable secure points
- 16. Recessed mounting

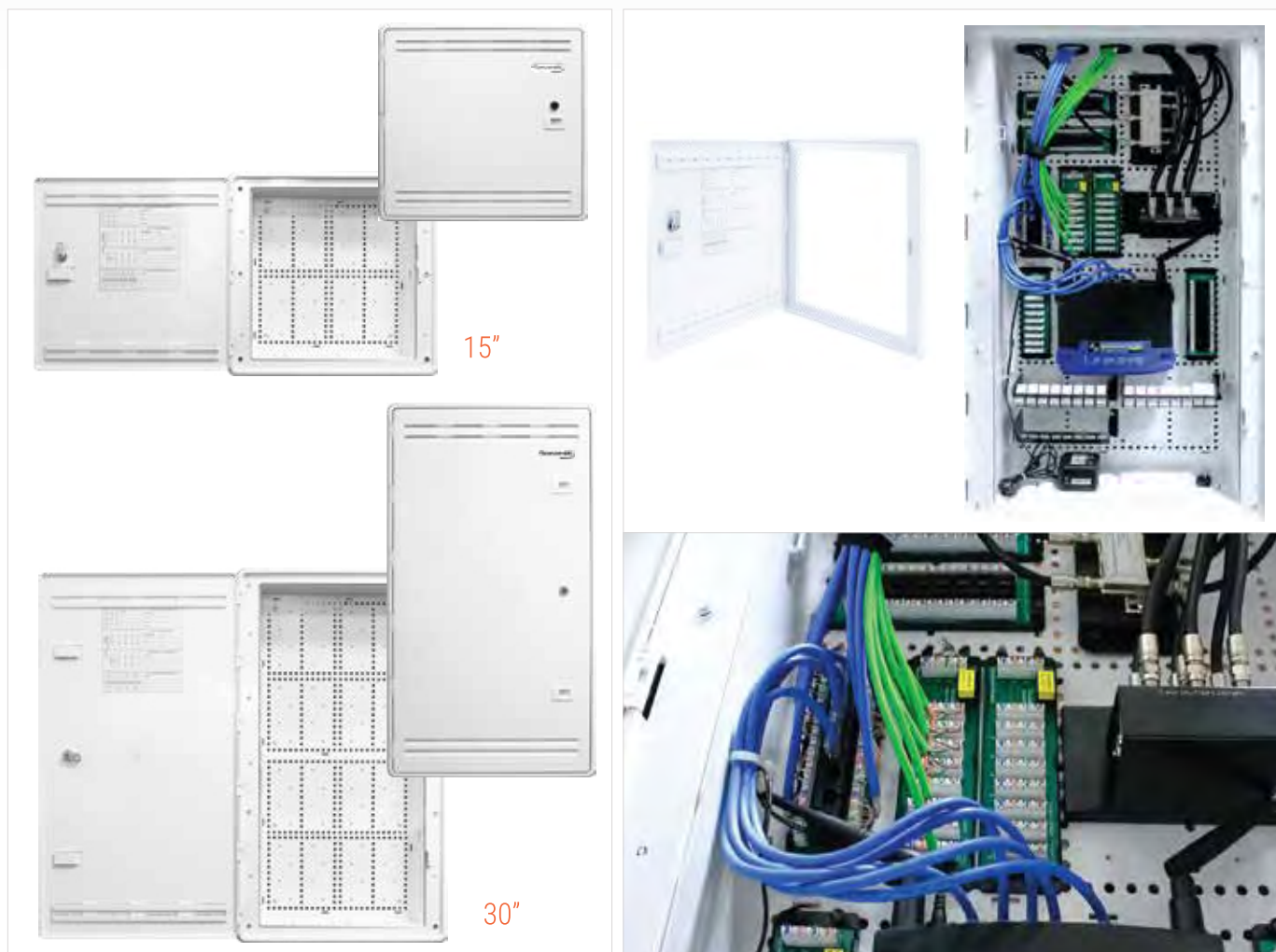


### ORDERING Information

PART NUMBER	DESCRIPTION	PACKAGE
WHWS15AEP-S	15" Plastic Enclosure w/Hinged Door, Trim Ring & Door Lock	SINGLE PACK
WHWS30AEP-S	30" Plastic Enclosure w/Hinged Door, Trim Ring & Door Lock	SINGLE PACK
WHWS15AEP-4PK	15" Plastic Enclosures w/Hinged Doors, Trim Rings & Door Locks	4-PACK
WHWS30AEP-4PK	30" Plastic Enclosures w/Hinged Doors, Trim Rings & Door Locks	4-PACK

# RESIDENTIAL STRUCTURED WIRING ENCLOSURES

## RESIDENTIAL STRUCTURED WIRING ENCLOSURES (PLASTIC, EMPTY, SINGLE / 4-PACKS)



### OVERVIEW:

The 15" & 30" Plastic Wi-Fi Friendly Enclosures are an ideal solution to consolidate and distribute wired and wireless home networks from a single, centralized location.

These enclosures are designed to be installed in single family homes, apartments, condominiums, multi-dwelling units (MDUs), and retrofit or custom homes.

Constructed from strong ABS plastic, these enclosures are designed to integrate wired and wireless devices into traditional structured wiring installations with no signal loss. The 15" & 30" Plastic Wi-Fi Friendly Enclosures allow the full reach of a wireless network, as opposed to standard metal enclosures that can limit the range of the wireless signal.

## RESIDENTIAL STRUCTURED WIRING ENCLOSURES (METAL, EMPTY)



14"

18"

28"

42"



### FEATURES:

- Consolidation point for all of structured cabling in a centralized location
- Distribution point for voice, data, video and other applications
- Convenient termination location for wiring cabling home runs from wall outlets to enclosure
- Surface or mount between 16" on center wood studs
- Flush metal hinged door & screw-on option w/ lock and keys
- UL Listed

### APPLICATIONS:

- Single family homes (New Constructions / Retrofit / DIY)
- Multi-Dwelling Units (MDUs, Condos, Apts.)
- Tract Homes
- Custom built homes

### ORDERING Information

PART NUMBER	DESCRIPTION	PACKAGE
WHWS1402	14" Enclosure with Hinged Door & Screw-on Option, w/Lock & Keys	SINGLE PACK
WHWS1802	18" Enclosure with Hinged Door & Screw-on Option, w/Lock & Keys	SINGLE PACK
WHWS2803	28" Enclosure with Hinged Door & Screw-on Option, w/Lock & Keys	SINGLE PACK
WHWS4203	42" Enclosure with Hinged Door & Screw-on Option, w/Lock & Keys	SINGLE PACK

# RESIDENTIAL STRUCTURED WIRING ENCLOSURES

## RESIDENTIAL STRUCTURED WIRING ENCLOSURES (METAL, LOADED)



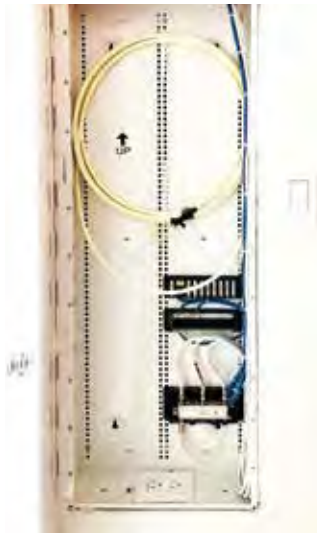
14"



18"



28"



### FEATURES:

- Consolidation point for all of structured cabling in a centralized location
- Distribution point for voice, data, video and other applications
- Convenient termination location for wiring cabling home runs from wall outlets to enclosure
- Surface or mount between 16" on center wood studs
- Flush metal hinged door & screw-on option w/ lock and keys
- UL Listed

### APPLICATIONS:

- Single family homes (New Constructions / Retrofit / DIY)
- Multi-Dwelling Units (MDUs, Condos, Apts.)
- Tract homes
- Custom built homes

### ORDERING Information

PART NUMBER	DESCRIPTION	PACKAGE
WHWS1402K	14" Enclosure with Hinged Door & Screw-On Option, w/Lock & Keys, Incl 8-Port, Cat6 Data, 8 Port Voice Module & 6-Port 2 GHz Video Splitter	SINGLE PACK
WHWS1802K	18" Enclosure with Hinged Door & Screw-On Option, w/Lock & Keys, Incl 8-Port, Cat6 Data, 8 Port Voice Module & 6-Port 2 GHz Video Splitter	SINGLE PACK
WHWS2802K	28" Enclosure with Hinged Door & Screw-On Option, w/Lock & Keys, Incl 8-Port, Cat6 Data, 8 Port Voice Module & 6-Port 2 GHz Video Splitter	SINGLE PACK

## ENCLOSURES VOICE, DATA AND VIDEO MODULES

8-Port Cat6 110-1DC Data Module w/ Plastic Plate



Part No. WHPP100805

- Supports up to 8 data connections
- Fits Wavenet's structured wiring enclosures

8-Port 110-1DC Voice Module w/ RJ-31X, Plastic Plate



Part No. WHBG100806

- Supports up to 8 voice connections w/RJ31X
- Fits Wavenet's structured wiring enclosures

2 GHz 8-Port Passive Video Splitter w/ Metal Bracket



Part No. WHVS10081

- 2GHz, 1 Input x 8 Output
- Fits Wavenet's structured wiring enclosures

2 GHz 6-Port Passive Video Splitter w/ Metal Bracket



Part No. WHVS1006-S

- Supports up to 8 data connections
- Fits Wavenet's structured wiring enclosures

4-Port 2GHz Video Splitter



Part No. WHVS1004

- Supports up to 4 2GHz video splitter connections
- Fits Wavenet's structured wiring enclosures

8-Port Blank Panel



Part No. WPK10080-E

- Multiple media applications
- Configurable with keystone modular connectors
- Fits Wavenet's structured wiring enclosures

Voice/Data/Video Module Kit



- (1) 8-Ports CAT6 Data, (1) 8-Ports Phone with RJ31X & (1) 6-Ports 2GHz splitter
- UL Listed and compliant with ANSI/TIA-568 standards for residential use

Part No. VDVM-8D8P6V



### ORDERING Information

PART NUMBER	DESCRIPTION	PACKAGE
WHPP100805	8-Port Cat6 110-1DC Data Module w/Plastic Plate	SINGLE PACK
WHBG100806	8-Port 110-1DC Voice Module w/RJ-31X, Plastic Plate	SINGLE PACK
WHVS10081	2 GHz 8-Port Passive Video Splitter w/ Metal Bracket	SINGLE PACK
WHVS1006-S	2 GHz 6-Port Passive Video Splitter w/ Plastic Bracket	SINGLE PACK
WHVS1004	2 GHz 4-Port Passive Video Splitter w/ Metal Bracket	SINGLE PACK
WPK10080-E	8-Port Blank Panel, for Multiple Media Applications	SINGLE PACK
VDVM-8D8P6V	8-Port Cat6 Data, 8-Port Voice & 6-Port 2GHz Video Module Kit	SINGLE PACK

PSI CONNECTIVITY SOLUTIONS