

CAT6A 110-TYPE PATCH PANELS



24-PORTS



48-PORTS

FEATURES:

- Meets Requirements Specified TIA/EIA-568-C.2 Category 6A Connecting Hardware
- [1u/24-Ports, 1u/48-Ports], 110-Type, T568A/B Wiring
- Hinged Windows Style with White Labels
- Includes Rear Cable Management Bar
- UL Listed
- Meets and exceeds ANSI/TIA-568-C Requirements
- Vertical 110-Type Termination Minimize Alien Cross Talk (AXT)
- Ideal for High Bandwidth 10G Application

ORDERING INFORMATION:

PART NUMBER	U SIZE	DESCRIPTION	PACKAGE
6APP24-S	1U	CAT6A, 110-Type, 24-Port, T568A/B, w/Rear CMGT, BAR	SINGLE PACK
6APP48-S	1U	CAT6A, 110-Type, 48-Port, T568A/B, w/Rear CMGT, BAR	SINGLE PACK

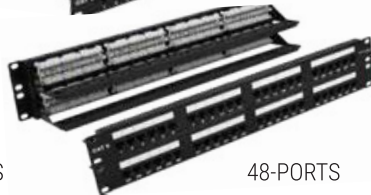
CAT6 110-TYPE PATCH PANELS



12-PORTS



24-PORTS



48-PORTS



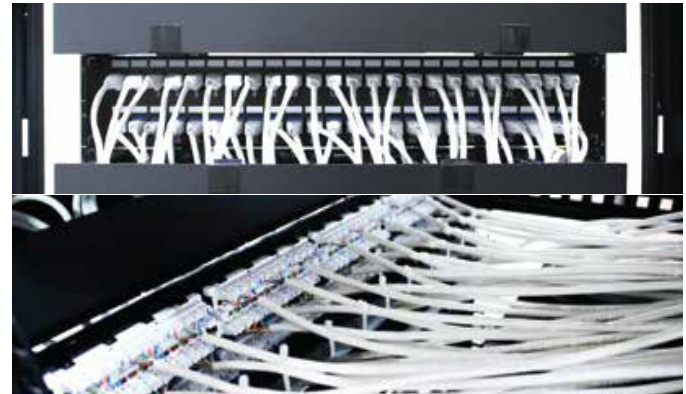
FEATURES:

- 12-Port, Wall Mount, T568A/B Wiring, Wall Mountable w/ 89D bracket
- [1U/24-ports, 2U/48-ports], 110-TYPE, T568A/B Wiring, Hinged Windows Style w/ White Labels, includes Rear Cable Management Bar
- Meets and exceeds ANSI/TIA-568-C Requirements
- UL listed

ORDERING INFORMATION:

PART NUMBER	U SIZE	COLOR	PACKAGE
6EPP12V-S	WALL MOUNT	CAT6, 110-Type, 12-Port, T568A/B, Wall Mount	SINGLE PACK
6EPP24-S	1U	CAT6, 110-Type, 24-Port, T568A/B	SINGLE PACK
6EPP48-S	2U	CAT6, 110-Type, 48-Port, T568A/B	SINGLE PACK

CAT5E 110-TYPE PATCH PANELS



FEATURES:

- 12-PORT, Wall Mount, T568A/B wiring, Wall Mountable w/ 89D Bracket, T568A/B Wiring
- [1U/24-ports, 2U/48-Ports], T568A/B Wiring, Hinged Windows Style
- w/ White Labels, includes rear cable management bar
- Meets and exceeds ANSI/TIA-568-C Requirements
- UL listed

ORDERING INFORMATION:

PART NUMBER	U SIZE	DESCRIPTION	PACKAGE
5EPP12V-S	WALL MOUNT	CAT6A, 110-Type, 24-Port, T568A/B, w/Rear CMGT, Bar	SINGLE PACK
5EPP24-S	1U	CAT6A, 110-Type, 48-Port, T568A/B, w/Rear CMGT, Bar	SINGLE PACK
5EPP48-S	2U	CAT5E, 110-TYPE, 48-Port, T568A/B, 2U	SINGLE PACK

ANGLED BLANK PATCH PANELS



FEATURES:

- Angled design saves rack space by routing patch cords directly into vertical cable managers
- Accommodates [1U/24-Ports, 1U/48-Ports] Keystone style Snap-In Modular Connectors
- Include rear cable management bar for proper cable support
- Numbered Ports with Write-On or Label areas
- Fits standard 19" Racks, Cabinets and Brackets
- Configurable with various Modular Keystone Connectors

ORDERING INFORMATION

PART NUMBER	U SIZE	COLOUR	PACKAGE
ABP1U-24P	1U	24-Port 1U Angled Blank Patch Panel w/Rear Cable Management Bar	SINGLE PACK
ABP1U-48P	1U	48-Port 1U Angled Blank Patch Panel w/Rear Cable Management Bar	SINGLE PACK

BLANK PATCH PANELS



FEATURES:

- 12-Port, Blank, wall mount, Ideal for multi-media applications, Compatible with Keystone style connectors
- 1U, 24-Port, Blank, w/ labeling areas, Ideal for multi-media

- applications, Compatible with keystone style connectors
- 2U, 48-Port, Blank, w/ labeling areas, Ideal for multi-media applications, Compatible with keystone style connectors

ORDERING INFORMATION

PART NUMBER	U SIZE		PACKAGE
BPPWM-12	WALL MOUNT	12-Port, Wall Mount	SINGLE PACK
BPPWM-24	1U	24-Port, U/FTP Blank Patch Panel W/Grounding Wire & Rear Mgnt. Bar, Rack Mount	SINGLE PACK
BPPWM-48	2U	48-Port, U/FTP Blank Patch Panel W/Grounding Wire & Rear Mgnt. Bar, Rack Mount	SINGLE PACK

CAT6A/6/5E PATCH CORDS



CAT6A FEATURES:

- 100% Copper Wire, EIA/TIA TSB-40A ETL verified
- Length (XX) 6 inch and rest in feet 1,2,3,5,6,7,10,14,15,20,25,30,35 in blue only, 50,75,100

CAT6 FEATURES:

- 100% Copper Wire, EIA/TIA TSB-40A ETL verified
- Length (XX) 6 inch and rest in feet 1,2,3,5,6,7,10,14,15,20,25,30,35 in blue only, 50,75,100

CAT5E FEATURES:

- 100% Copper Wire, EIA/TIA TSB-40A ETL verified
- Length (XX) 6 inch and rest in feet 1,2,3,5,7,10,14,15,25,35,50,75,100

ORDERING INFORMATION

PART NUMBER	DESCRIPTION	COLOUR	PACKAGE
6A04UMXX-PC-XX	CAT6A 10G UTP Snagless Molded Boot Patch Cord,100% Bare Copper, RJ-45-to-RJ-45 with 50-Micron Gold-Plated Contacts, Wired T568B	W B IV LA Y G O R BL	SINGLE PACK
6E04UMXX-PC-XX	CAT6 UTP Snagless Molded Boot Patch Cord,100% Bare Copper, RJ-45-to-RJ-45 With 50-Micron Gold-Plated Contacts, Wired T568B	W B IV LA Y G O R BL	SINGLE PACK
5E04UMXX-PC-XX	CAT5E UTP Snagless Molded Boot Patch Cord,100% Bare Copper, RJ-45-to-RJ-45 with 50-Micron Gold-Plated Contacts, Wired T568B	W B IV LA Y G O R BL	SINGLE PACK