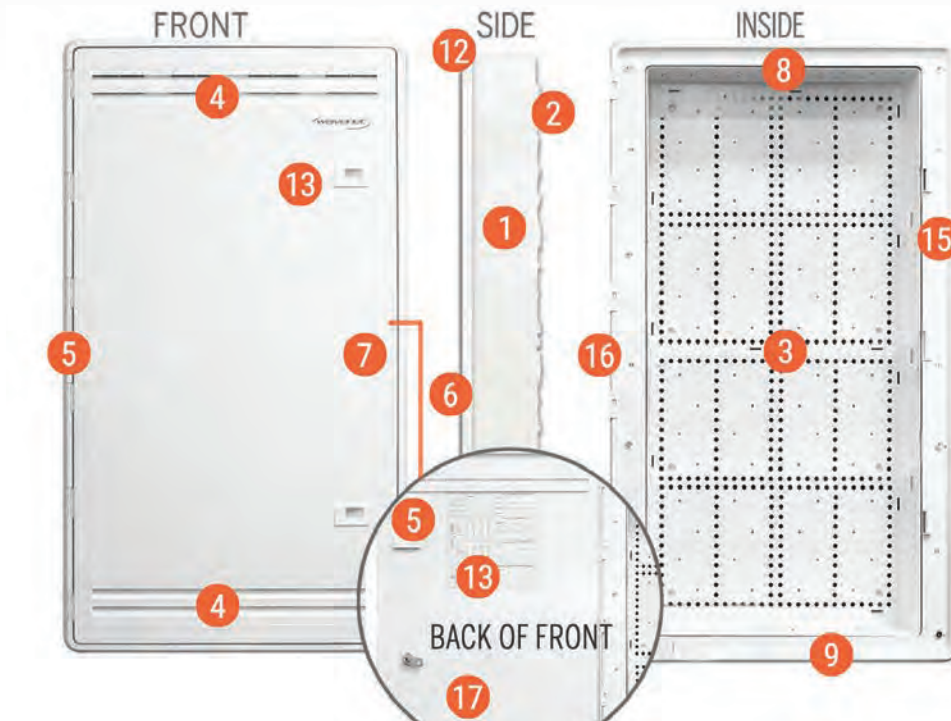


RESIDENTIAL STRUCTURED WIRING ENCLOSURES (PLASTIC, EMPTY, SINGLE / 4-PACKS)



1. UL-rated ABS plastic
2. Surface or flush mounting
3. Horizontal & vertical mounting hole patterns
4. Door hidden vent holes
5. Hinged door with trim ring
6. Reversible door
7. Lockable
8. Top & bottom knockouts for cable entry & exit
9. Two outlet knock-outs for power outlets
10. Available in two sizes 15" and 30"
11. Wi-Fi friendly signals
12. Enclosure Dimensions:
15" H x 14.42" W x 3.42" D
30" H x 14.42" W x 3.42" D
13. Door latch
14. Wiring location label
15. Cable secure points
16. Recessed mounting

| PART NUMBER | DESCRIPTION | PACKAGE |
|---------------|--|-------------|
| WHWS15AEP-S | 15" Plastic Enclosure w/Hinged Door, Trim Ring & Door Lock | SINGLE PACK |
| WHWS30AEP-S | 30" Plastic Enclosure w/Hinged Door, Trim Ring & Door Lock | SINGLE PACK |
| WHWS15AEP-4PK | 15" Plastic Enclosures w/Hinged Doors, Trim Rings & Door Locks | 4-PACK |
| WHWS30AEP-4PK | 30" Plastic Enclosures w/Hinged Doors, Trim Rings & Door Locks | 4-PACK |



15"



30"

The 15" & 30" Plastic Wi-Fi Friendly Enclosures are an ideal solution to consolidate and distribute wired and wireless home networks from a single, centralized location.

These enclosures are designed to be installed in single family homes, apartments, condominiums, multi-dwelling units (MDUs), and retrofit or custom homes.

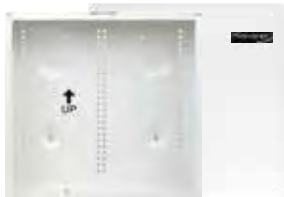
Constructed from strong ABS plastic, these enclosures are designed to integrate wired and wireless devices into traditional structured wiring installations with no signal loss. The 15" & 30" Plastic Wi-Fi Friendly Enclosures allow the full reach of a wireless network, as opposed to standard metal enclosures that can limit the range of the wireless signal.

RESIDENTIAL STRUCTURED WIRING ENCLOSURES

RESIDENTIAL STRUCTURED WIRING ENCLOSURES (METAL, EMPTY)

FEATURES:

- Consolidation point for all of structured cabling in a centralized location
- Distribution point for voice, data, video and other applications
- Convenient termination location for wiring cabling home runs from wall outlets to enclosure
- Surface or mount between 16" on center wood studs
- Flush metal hinged door & screw-on option w/ lock and keys
- UL Listed



14"



18"



28"



42"

APPLICATIONS:

- Single family homes (New Constructions / Retrofit / DIY)
- Multi-Dwelling Units (MDUs, Condos, Apts.)
- Tract Homes
- Custom built homes

| PART NUMBER | DESCRIPTION | PACKAGE |
|-------------|---|-------------|
| WHWS1402 | 14" Enclosure with Hinged Door & Screw-on Option, w/Lock & Keys | SINGLE PACK |
| WHWS1802 | 18" Enclosure with Hinged Door & Screw-on Option, w/Lock & Keys | SINGLE PACK |
| WHWS2803 | 28" Enclosure with Hinged Door & Screw-on Option, w/Lock & Keys | SINGLE PACK |
| WHWS4203 | 42" Enclosure with Hinged Door & Screw-on Option, w/Lock & Keys | SINGLE PACK |

RESIDENTIAL STRUCTURED WIRING ENCLOSURES (METAL, LOADED)

APPLICATIONS:

- Single family homes (New Constructions / Retrofit / DIY)
- Multi-Dwelling Units (MDUs, Condos, Apts.)
- Tract homes
- Custom built homes



14"



18"



28"

FEATURES:

- Consolidation point for all of structured cabling in a centralized location
- Distribution point for voice, data, video and other applications
- Convenient termination location for wiring cabling home runs from wall outlets to enclosure
- Surface or mount between 16" on center wood studs
- Flush metal hinged door & screw-on option w/ lock and keys
- UL Listed

| PART NUMBER | DESCRIPTION | PACKAGE |
|-------------|--|-------------|
| WHWS1402K | 14" Enclosure with Hinged Door & Screw-On Option, w/Lock & Keys, Incl 8-Port, Cat6 Data, 8 Port Voice Module & 6-Port 2 GHz Video Splitter | SINGLE PACK |
| WHWS1802K | 18" Enclosure with Hinged Door & Screw-On Option, w/Lock & Keys, Incl 8-Port, Cat6 Data, 8 Port Voice Module & 6-Port 2 GHz Video Splitter | SINGLE PACK |
| WHWS2802K | 28" Enclosure with Hinged Door & Screw-On Option, w/Lock & Keys, Incl 8-Port, Cat6 Data, 8 Port Voice Module & 6-Port 2 GHz Video Splitter | SINGLE PACK |

ENCLOSURES VOICE, DATA AND VIDEO MODULES

8-Port Cat6 110-1DC Data Module w/ Plastic Plate



WHPP100805

- Supports up to 8 data connections
- Fits Wavenet's structured wiring enclosures

8-Port 110-1DC Voice Module w/ RJ-31X, Plastic Plate



WHBG100806

- Supports up to 8 voice connections w/RJ31X
- Fits Wavenet's structured wiring enclosures

2 GHz 8-Port Passive Video Splitter w/ Metal Bracket



WHVS10081

- 2GHz, 1 Input x 8 Output
- Fits Wavenet's structured wiring enclosures

2 GHz 6-Port Passive Video Splitter w/ Metal Bracket



WHVS1006-S

- Supports up to 8 data connections
- Fits Wavenet's structured wiring enclosures

4-Port 2GHz Video Splitter



WHVS1004

- Supports up to 4 2GHz video splitter connections
- Fits Wavenet's structured wiring enclosures

8-Port Blank Panel



WPK10080-E

- Multiple media applications
- Configurable with keystone modular connectors
- Fits Wavenet's structured wiring enclosures

Voice/Data/Video Module Kit



- (1) 8-Ports CAT6 Data, (1) 8-Ports Phone with RJ31x & (1) 6-Ports 2GHz splitter
- UL Listed and compliant with ANSI/TIA-568 standards for residential use

VDVM-8D8P6V



| PART NUMBER | DESCRIPTION | PACKAGE |
|-------------|---|-------------|
| WHPP100805 | 8-Port Cat6 110-1DC Data Module w/Plastic Plate | SINGLE PACK |
| WHBG100806 | 8-Port 110-1DC Voice Module w/RJ-31X, Plastic Plate | SINGLE PACK |
| WHVS10081 | 2 GHz 8-Port Passive Video Splitter w/ Metal Bracket | SINGLE PACK |
| WHVS1006-S | 2 GHz 6-Port Passive Video Splitter w/ Plastic Bracket | SINGLE PACK |
| WHVS1004 | 2 GHz 4-Port Passive Video Splitter w/ Metal Bracket | SINGLE PACK |
| WPK10080-E | 8-Port Blank Panel, for Multiple Media Applications | SINGLE PACK |
| VDVM-8D8P6V | 8-Port Cat6 Data, 8-Port Voice & 6-Port 2GHz Video Module Kit | SINGLE PACK |